

Location MAP (map not scale)



Site Address: **Business-18** Khasara No.171/88/1/2 Brijlalpura, Near Gopalpura Bypass, Opposite New Atish Market, Jaipur - 302 020



NCG DEVELOPERS & INFRASTRUCTURE

Office: Business-18 Khasara No. 171/88/1/2 Brijlalpura, Near Gopalpura Bypass, Opposite New Atish Market, Jaipur - 302 020 | **E-mail:** sales@chordiasgroup.com

9024 200 400 | www.chordiasgroup.com | **Find us on:**   

Disclaimer : Builders and Developers reserve the right to change any design and specification of the building without any prior notice and information. This brochure is for illustration purpose only and it cannot be in any way treated as a legal document. All information, specification, plans material and visual representations contained in the brochure, model & sample offices are subject to change from time to time by the developer and / or the competent authorities and shall not form part of the offer or contract.

aash Design Studio 9829061920

BUSINESS

SPACE IN YOUR BUDGET!



A Panoramic Commercial Tower Redefining Business in Jaipur, Lifestyle and Retail will provide international Standard experience.

The **Business 18** tower is situated in the prime development of near mansarovar, Jaipur; this is a unique concept of Business Tower and pedestrian zone for the office purposes as well as retail outlets. The convenient location proves to be an advantage, while inviting clients, attracting customers or hiring the best talent. The tower is situated on the crowded place close to mansarovar, Jaipur with ample of parking space, besides refreshing from stress on the job with cafeteria, gymnasium, splash pool, banquette and business centre. The all offices are air-conditioned with an atria concept. The atria are a popular design feature because they give their buildings a "feeling of space and light. The Business 18 is the bouquet of matching Life style on work, which take your business to the next level of success.

Take your business a notch higher with Business 18. Whether you're looking to start a new business, move to a better workplace or expand your operations, Business 18 is an ideal choice for commercial establishment with a strong foresight, with advantages of Metro connectivity and Dravyavati River view. Henceforth, business 18 is an ideal place with **CORPORATE LIFE INFINITE GROWTH**

NOW AFFORDABLE BUSINESS SPACES



-  **Roof Top**
Roof top Lounge, Restaurant
-  **13th Floor**
Gym, Restro-Bar, Conference Hall, Spa, Saloon
-  **10th to 12th Floor**
Corporate Hub
-  **7th Floor**
Executive offices
-  **5th, 6th, 8th & 9th Floor**
Fortune Executive offices
-  **2nd to 4th Floor**
Fortune Corporate Office
-  **1st Floor**
Mega Showrooms
-  **Ground Floor**
Mega Showrooms & Parking
-  **Lower Ground Floor**
Mini Showrooms & Shops
-  **Basement**
L-1/L-2/L-3 Parking

DESIGNED TO REFLECT YOUR CORPORATE STATURE

BUSINESS 18
corporate life infinite growth



AT THE CENTRE OF CITY LIFE

LOCATION THAT MEANS BUSINESS

Location Advantages

- Close to Mansarovar - Asia's largest residential colony - will ascertain huge footfall.
- High-end fashion stores and food junctions in the neighbourhood
- Surrounded by commercial areas of New Sanganer Road, New Atish Market and Mansarovar.
- Easy access to roads leading to the prominent cities of New Delhi, Ajmer, Kota, Agra, etc.
- Serene neighbouring areas.
- 500 Mtrs from Mansarovar Metro Station.
- 200 Mtrs from Atish Market Metro Station.
- Approx 8 Kms from Airport.
- 8 Kms from Railway Station.
- Approx 10 Kms from MI Road & Walled City.
- 8 Kms from Lal Kothi & Gopalpura.
- Easy approach to Vaishali Nagar, Shyam Nagar, Mansarovar & Sodala.

Why BUSINESS 18 ?
corporate life infinite growth

- Business Tower and pedestrian zone.
- Atria are a popular design for feature.
- Provision of Air Conditioned in Offices
- Internationally acclaimed design.
- Nearness attribute Ring Road and DMIC.
- Surrounding with Neighbourhood Vaishali Nagar / Mansarovar / Gopalpura Bypass / Shyam Nagar / Nirman Nagar.
- Renowned aesthetic design business tower.
- One of the Tallest commercial tower in vicinity.
- Close to Mansarovar metro station
- Connected to Agra, Ajmer, Delhi and Kota.
- Ample parking space with 3 layer parking.
- Amenities of refreshing from work stress.
- Earthquake resistance structure.
- Well connected from Metro Route.
- Approx. 140 ft wide frontage on 160 ft wide road.
- Pleasant experience 4 side open.
- Maintenance managed by professional agency.
- Aims to redefine business and Lifestyle.
- Metro facing offices/scenic view of Dravyavati River
- Corporate culture ambience.
- Premium location.



EXCLUSIVE FOUR ZONE BUSINESS HUB

Most Incredible Business Location with METRO & DRAVYAVATI RIVER FACING



Corporate & Executive Offices



Conference Hall



Restaurant

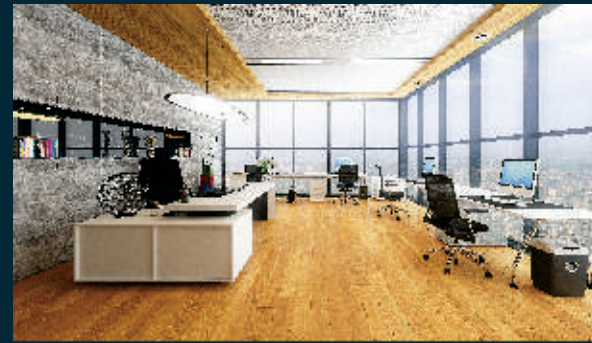


Retails

A boutique retail space, featuring a splendid collection of world class outlets and entertainment options that lets you turn your mind away from the stresses of the day indulge yourself.



SHOWROOM



FORTUNE EXECUTIVE OFFICES



CONFERENCE HALL



BUSINESS CENTER



CORPORATE OFFICES

GROW YOUR BUSINESS WITH...

RESHAPE YOUR BUSINESS...



GYMNASIUM



SPA



SALON



OFFICE LOBBY



TERRACE AREA

EXTERIOR

- Magnificent & attractive modern elevation in combination of glass, ACP & paint.
- Imposing grand entrance lobby.
- Attractive railing.

INTERIORS

- Exclusive designer vitrified tiles / granite / stone on floor & staircase.
- MS railing.
- Granite / marble / stone cladding on flooring & lift lobby.
- Broadband ready internet connections to office spaces.
- Vastu friendly.

- Premium modular switches.
- WI-FI.
- Elegant reception lobby and waiting area with electronic security features.
- Designer main door for offices.
- Designer false ceiling in lobby areas.
- Airconditioned offices.

LIGHTING

- Advanced lighting fixtures including energy efficient lamps, compact fluorescent burners.
- Ample light & ventilation for offices.
- Lighting fixtures including energy efficient lamps, compact fluorescent burners.
- Power connection db to all saleable areas.

**FUTURE
READY
BUSINESS
FACILITIES**



FIRE FIGHTING SYSTEMS

- All areas fully equipped with latest fire fighting systems (sprinklers & smoke detectors, wetrisers & fireextinguishers) in common areas only
- Fire fighting static water tanks with fire pumps
- Fire escape staircase
- Fire hydrant in exterior areas
- Wet risers

PARKING

- Three layer basement for car parking
- Open car parking on ground floor
- Mechanised parking in basement

TOILETS

- Premium fixtures & fittings toilets
- Combination of ceramic tiles, stone/ granite/marble for flooring & wall dado
- Branded basin taps & flushing system

POWER BACKUP

- 100% power backup for common areas

VERTICAL CIRCULATION

- Passengers & service lift

BUILDING MAINTENANCE

- Building management by a professional agency
- 24 hours security
- Housekeeping agency for proper cleaning

OTHER FEATURES

- Earthquake resistant RCC frame structure
- 24 x 7 hrs. Security with CCTV cameras
- Elevators
- Water cooled condenser AC system
- Channel music
- Ample sit out areas
- AC waiting area for visitors
- Energy efficient building
- Management by professional agency
- D.G. System for power backup
- Rain water harvesting system
- Outer development with landscaping

**WORLD-CLASS
AMENITIES**

- Cafeteria
- Conference Hall
- Gymnasium
- Spa & Saloon
- Multi Cuisine Restaurant
- Concierge Corner
- Retail Stores
- Valet Parking
- Low maintenance building
- Open Terrace Lounge

Disclaimer: In the interest of continual developments in design & quality of construction, the developer reserves all rights to make any changes in the scheme including technical specification, design, planning, layout & all the allotments, purchaser shall abide by such changes.

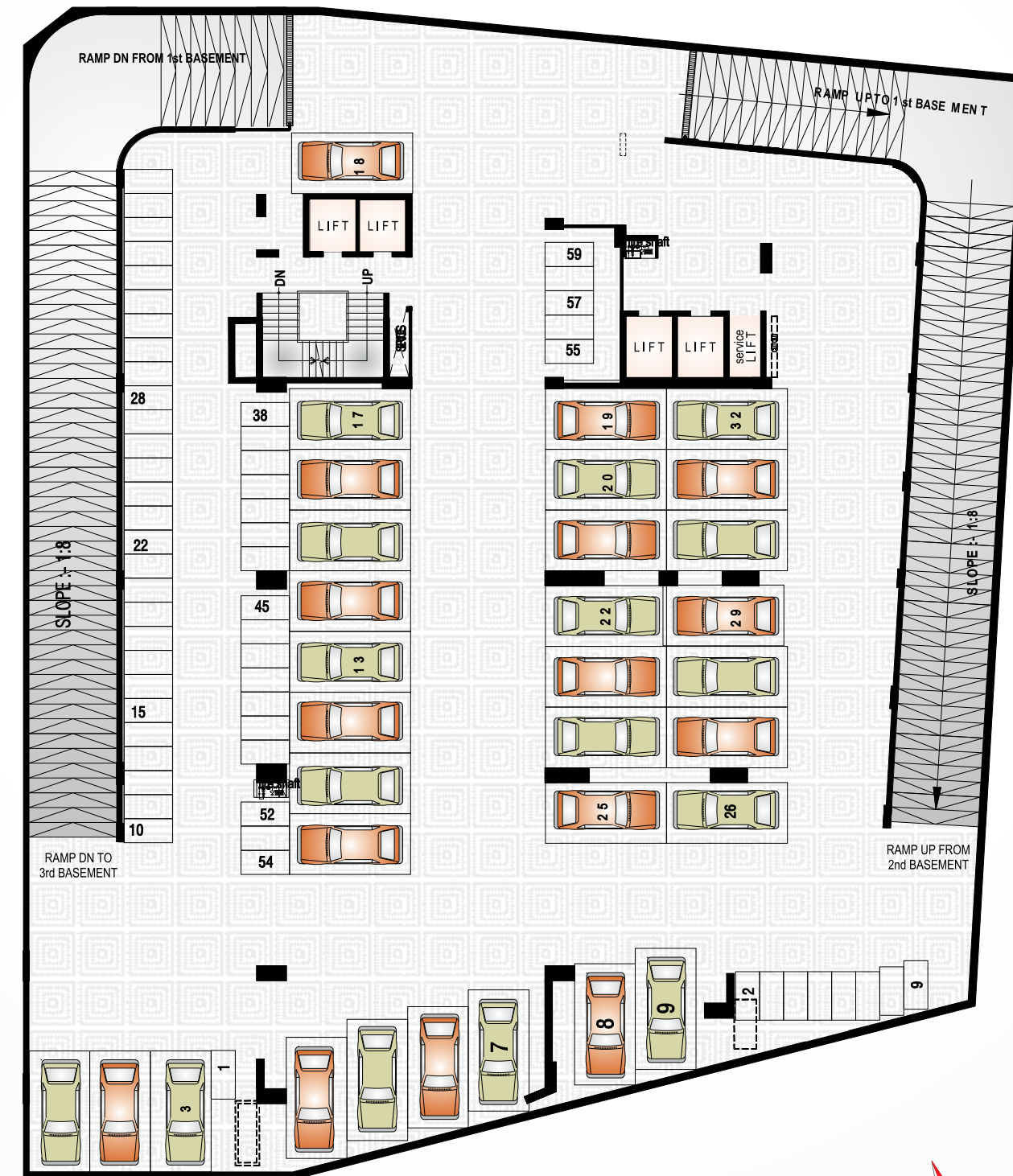
BASEMENT -1
Floor Block Layout



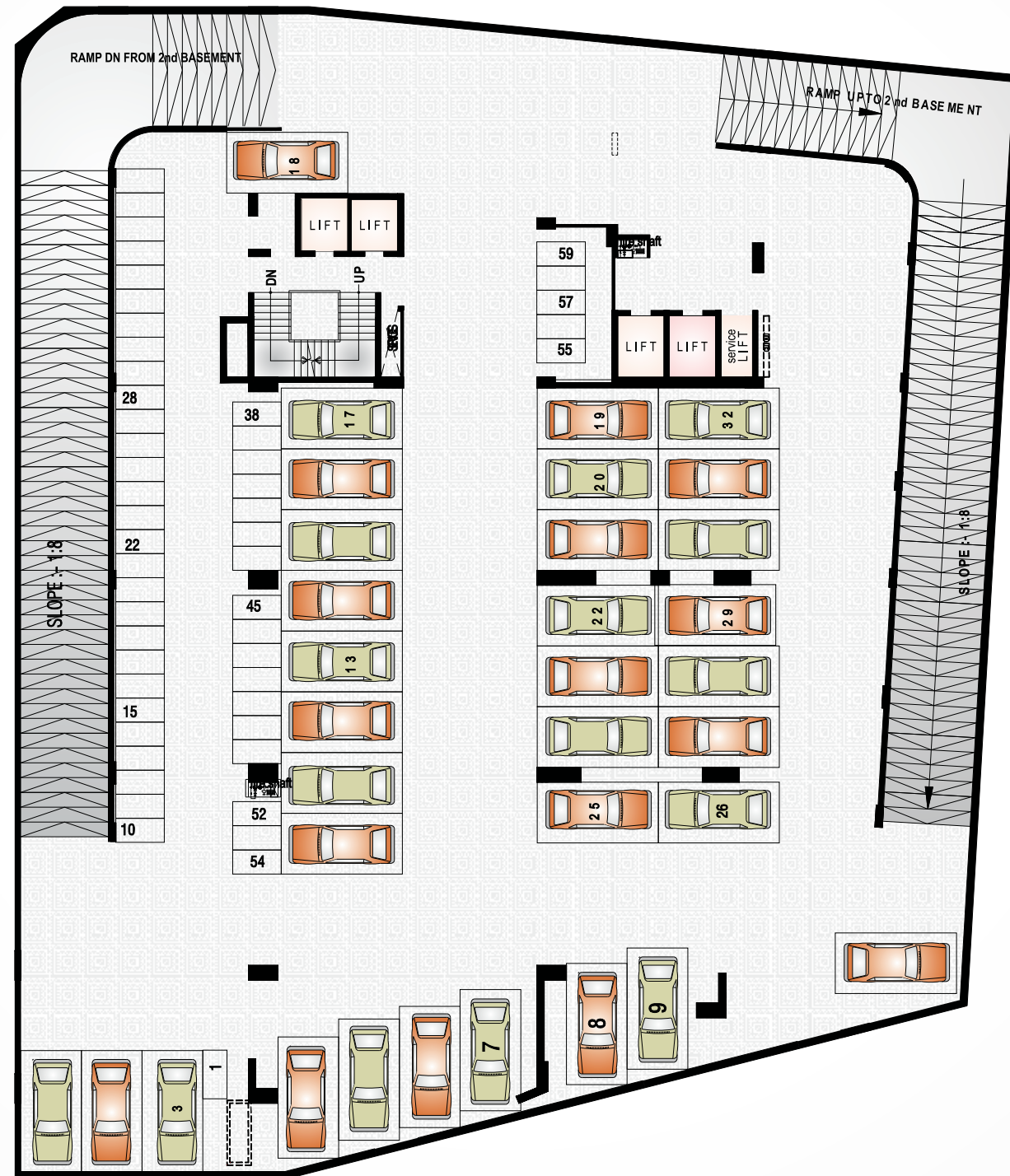
BASEMENT -2
Floor Block Layout



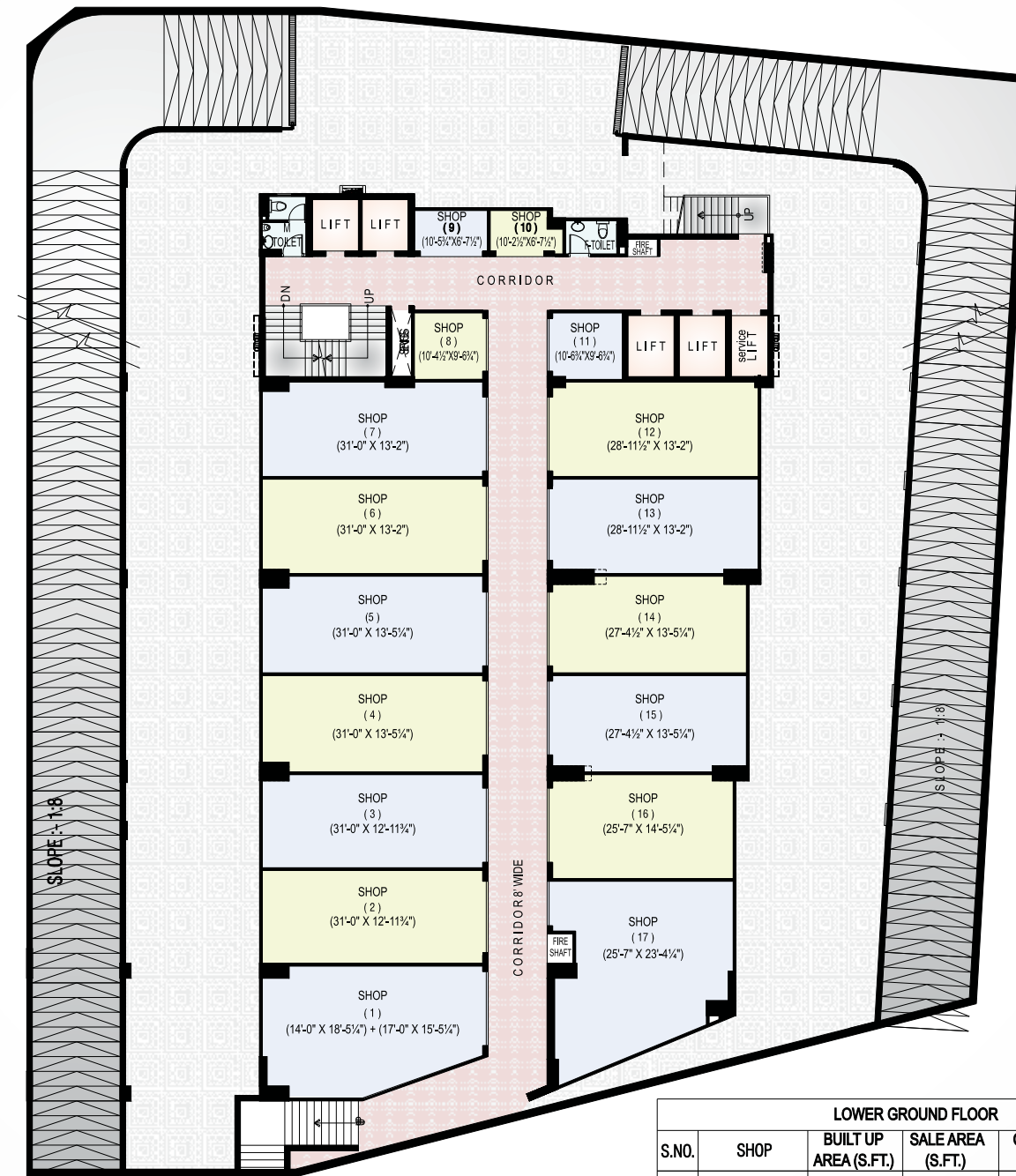
BASEMENT -2 FLOOR PLAN



BASEMENT -3
Floor Block Layout

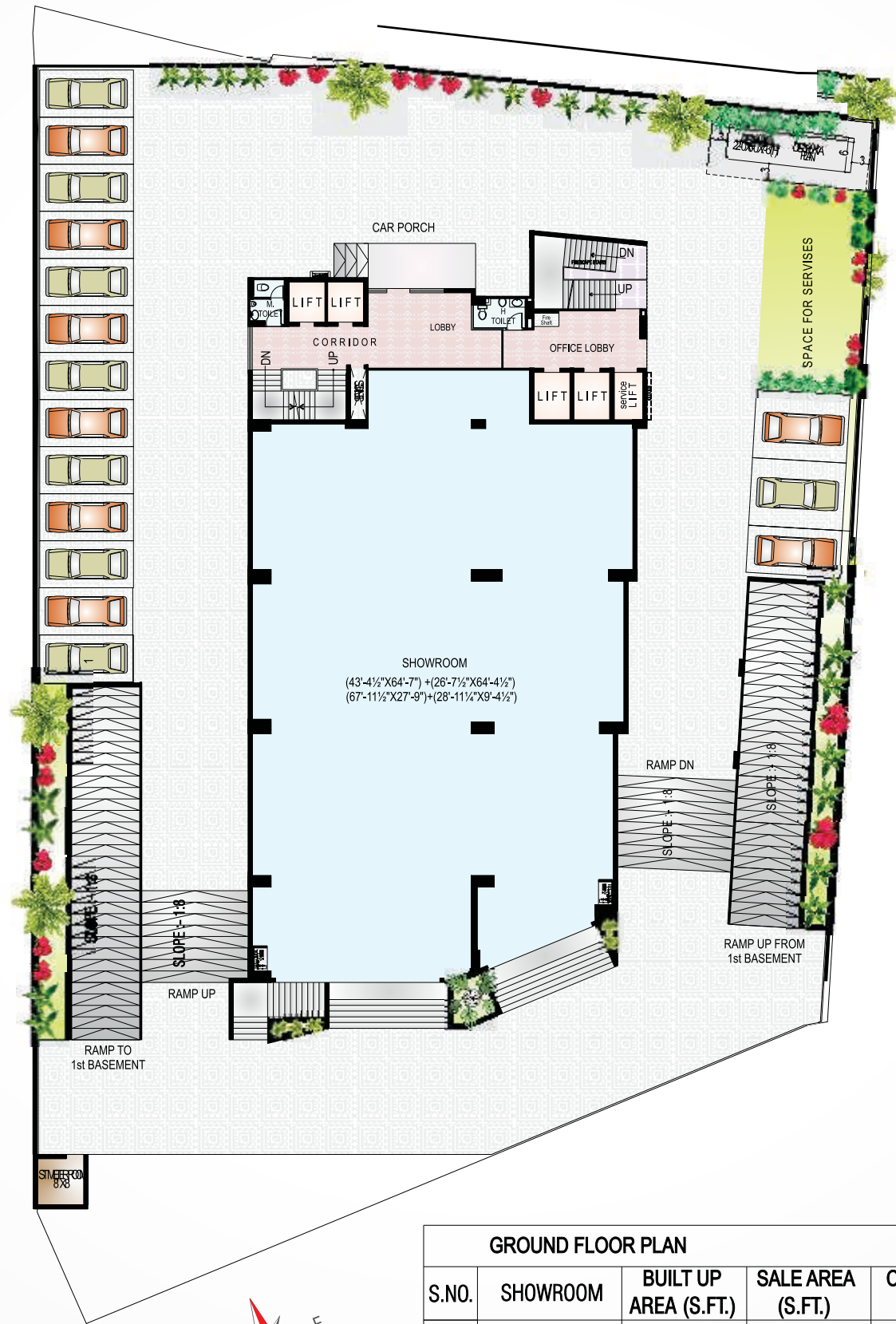


Lower Ground
Floor Block Layout



LOWER GROUND FLOOR			
S.NO.	SHOP	BUILT UP AREA (S.FT.)	CARPET AREA (S.FT.)
1	SHOP-01	520.56	480.26
2	SHOP-02	402.03	383.73
3	SHOP-03	402.03	380.79
4	SHOP-04	416.56	392.98
5	SHOP-05	416.56	392.07
6	SHOP-06	407.90	387.35
7	SHOP-07	407.90	381.86
8	SHOP-08	99.27	88.64
9	SHOP-09	69.36	60.77
10	SHOP-10	65.48	54.04
11	SHOP-11	100.96	89.59
12	SHOP-12	380.87	361.72
13	SHOP-13	380.87	357.59
14	SHOP-14	368.11	341.22
15	SHOP-15	368.11	343.22
16	SHOP-16	368.25	345.78
17	SHOP-17	591.04	529.64
TOTAL		5766.86	5371.25

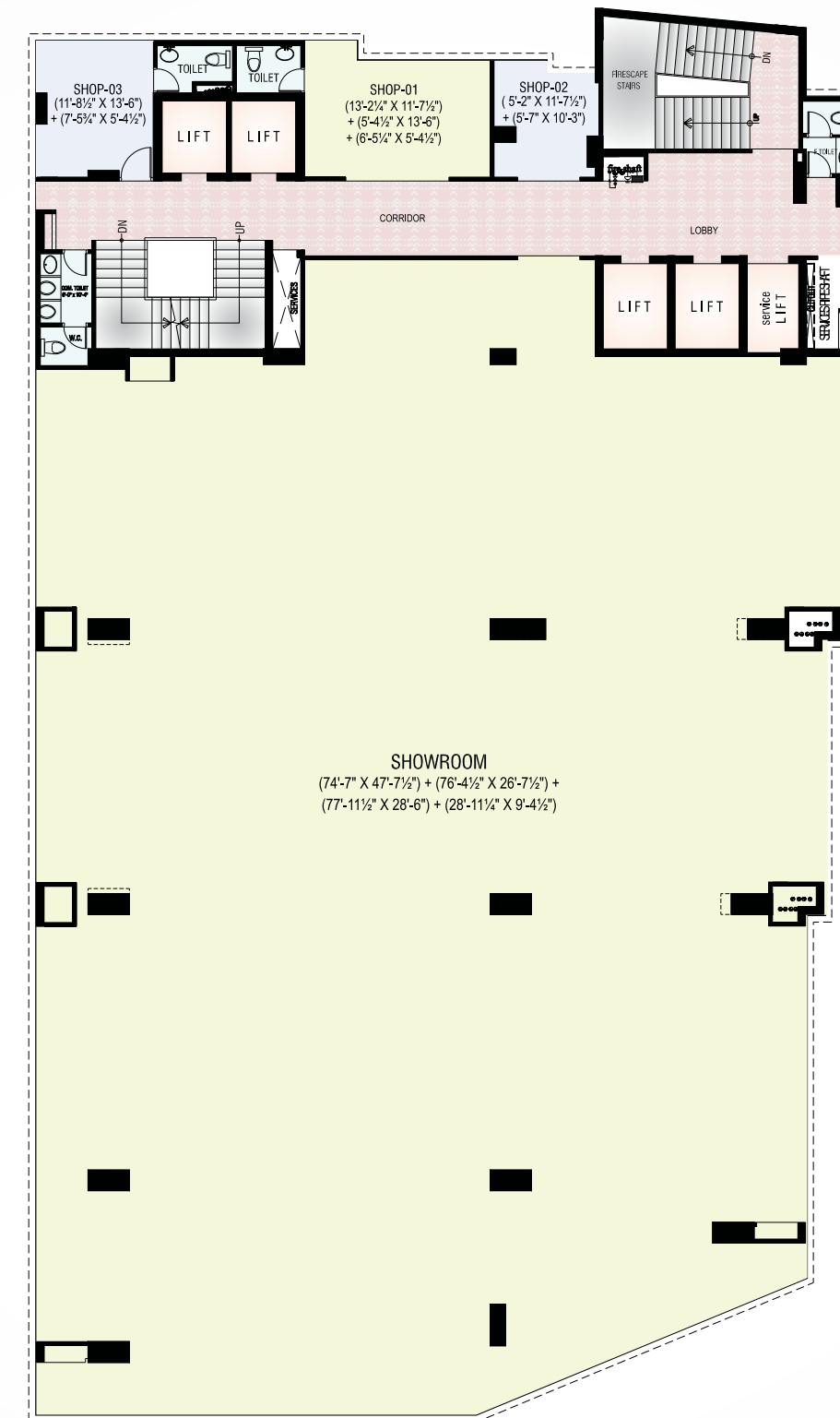
GROUND FLOOR
Floor Block Layout



GROUND FLOOR PLAN				
S.NO.	SHOWROOM	BUILT UP AREA (S.FT.)	SALE AREA (S.FT.)	CARPET AREA (S.FT.)
1	SHOWROOM	6564.69	9519.00	6275.93
TOTAL		6564.69	9519.00	6275.93



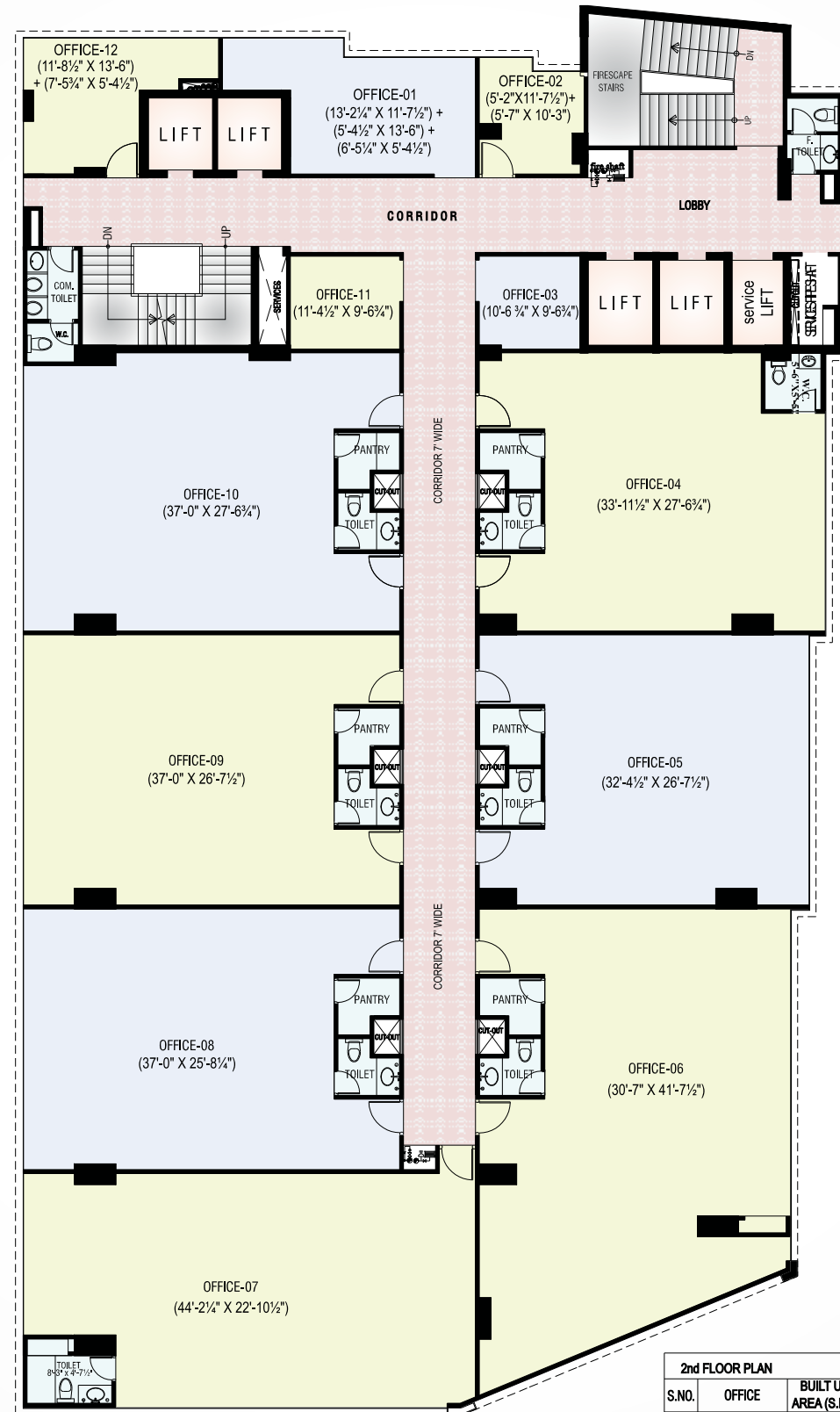
FIRST FLOOR
Block Layout



FIRST FLOOR PLAN				
S.NO.	SHOWROOM	BUILT UP AREA (S.FT.)	SALE AREA (S.FT.)	CARPET AREA (S.FT.)
1	SHOWROOM	7788.73	11294.00	7696.16
2	SHOP-01	260.45	378.00	247.00
3	SHOP-02	117.19	170.00	102.69
4	SHOP-03	198.26	287.00	176.21
TOTAL		8364.63	12129.00	8222.06



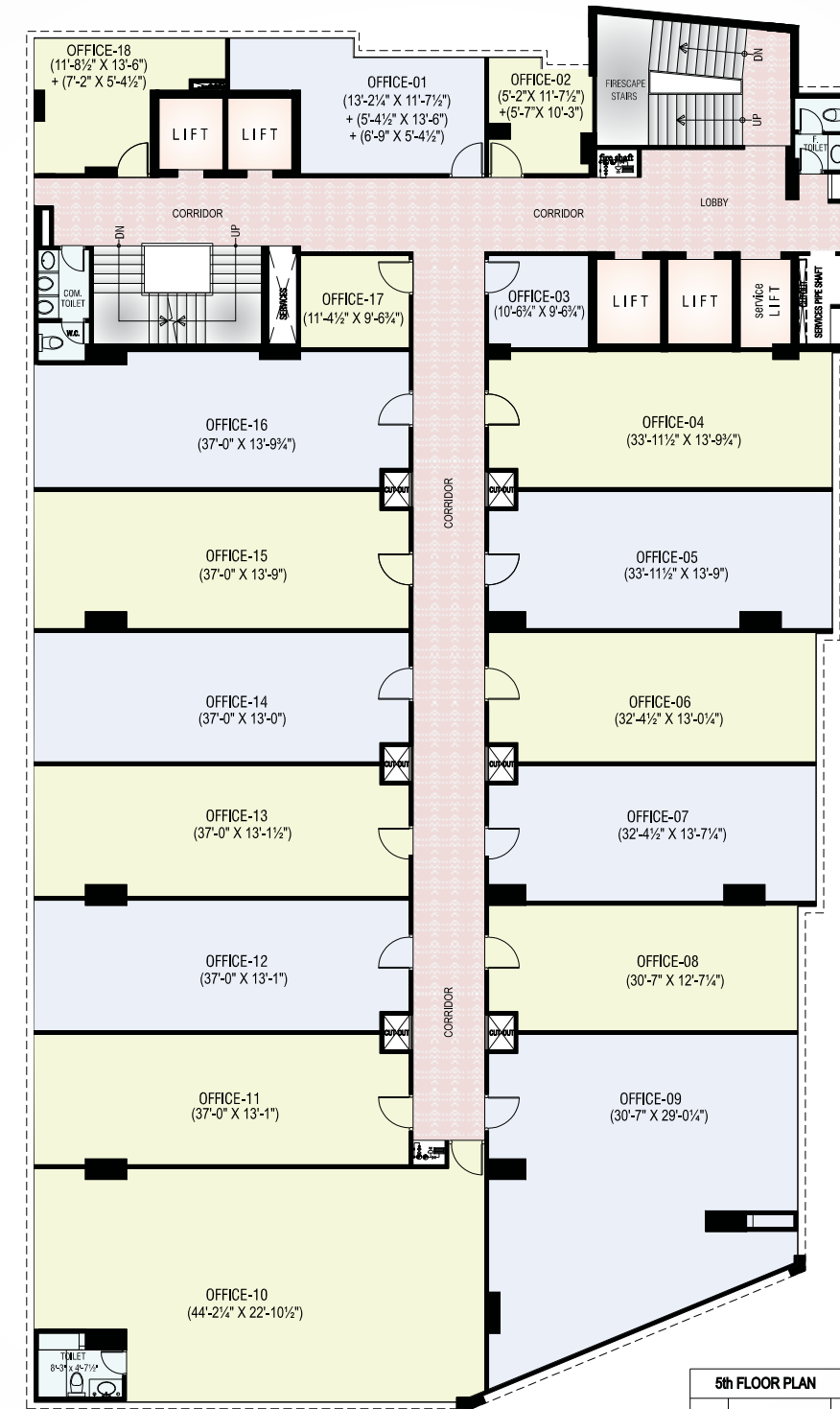
2nd - 4th FLOOR
Block Layout



2nd FLOOR PLAN			
S.NO.	OFFICE	BUILT UP AREA (S.F.T.)	CARPET AREA (S.F.T.)
1	201	280.45	378.00
2	202	117.19	170.00
3	203	100.96	140.00
4	204	923.71	1339.00
5	205	852.36	1238.00
6	206	1254.65	1819.00
7	207	1015.72	1473.00
8	208	940.89	1364.00
9	209	975.42	1414.00
10	210	1000.36	1451.00
11	211	108.89	158.00
12	212	198.28	287.00
TOTAL		7748.49	11235.00



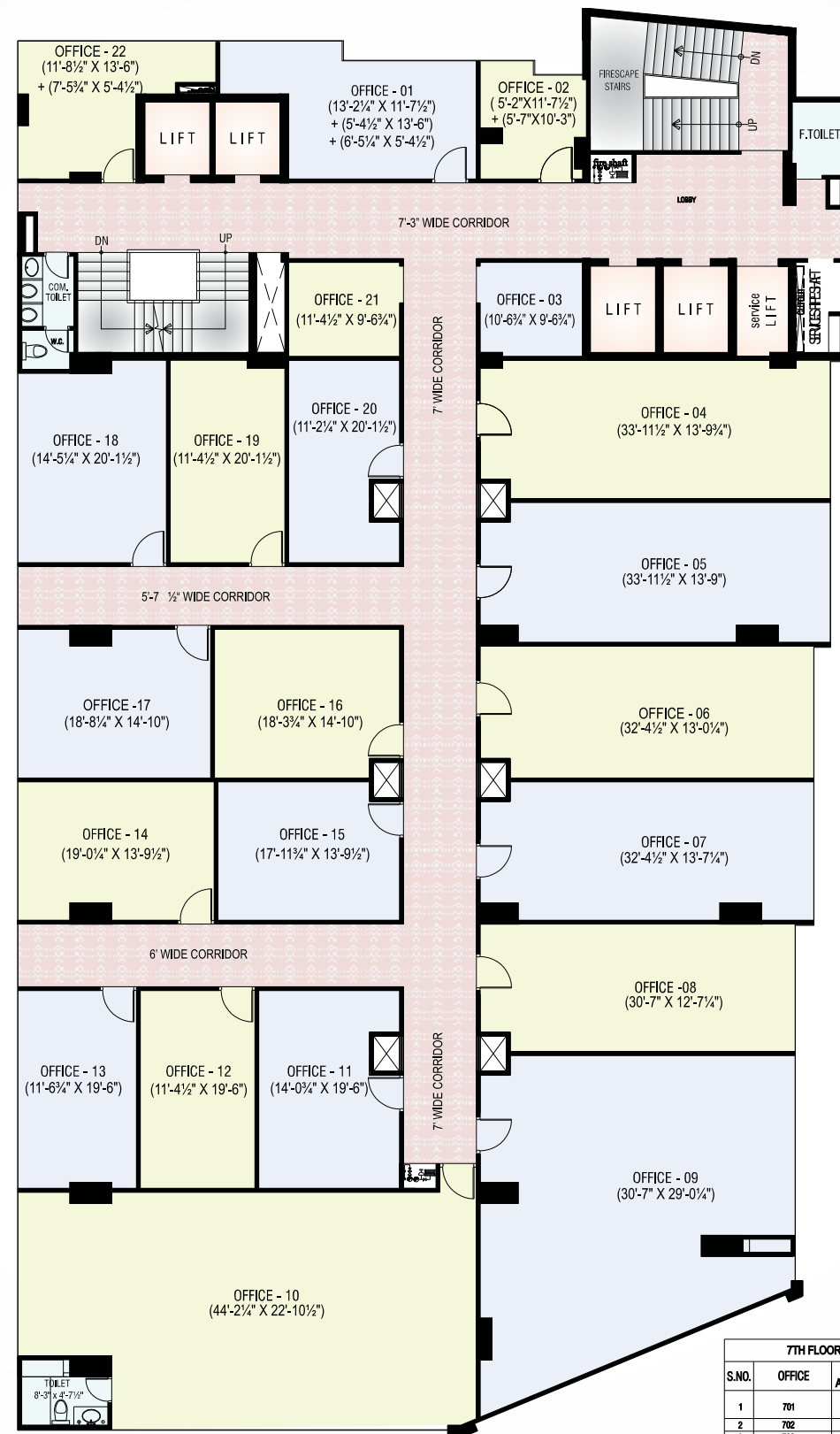
5th - 6th FLOOR
Block Layout



5th FLOOR PLAN			
S.NO.	OFFICE	BUILT UP AREA (S.F.T.)	CARPET AREA (S.F.T.)
1	501	262.13	380.00
2	502	117.19	170.00
3	503	100.96	140.00
4	504	460.65	668.00
5	505	462.20	670.00
6	506	416.91	604.00
7	507	436.08	632.00
8	508	380.63	552.00
9	509	874.06	1287.00
10	510	1015.72	1473.00
11	511	478.32	695.00
12	512	478.32	695.00
13	513	481.06	698.00
14	514	478.43	691.00
15	515	503.97	731.00
16	516	496.42	720.00
17	517	108.89	158.00
18	518	196.58	285.00
TOTAL		7747.72	11235.00



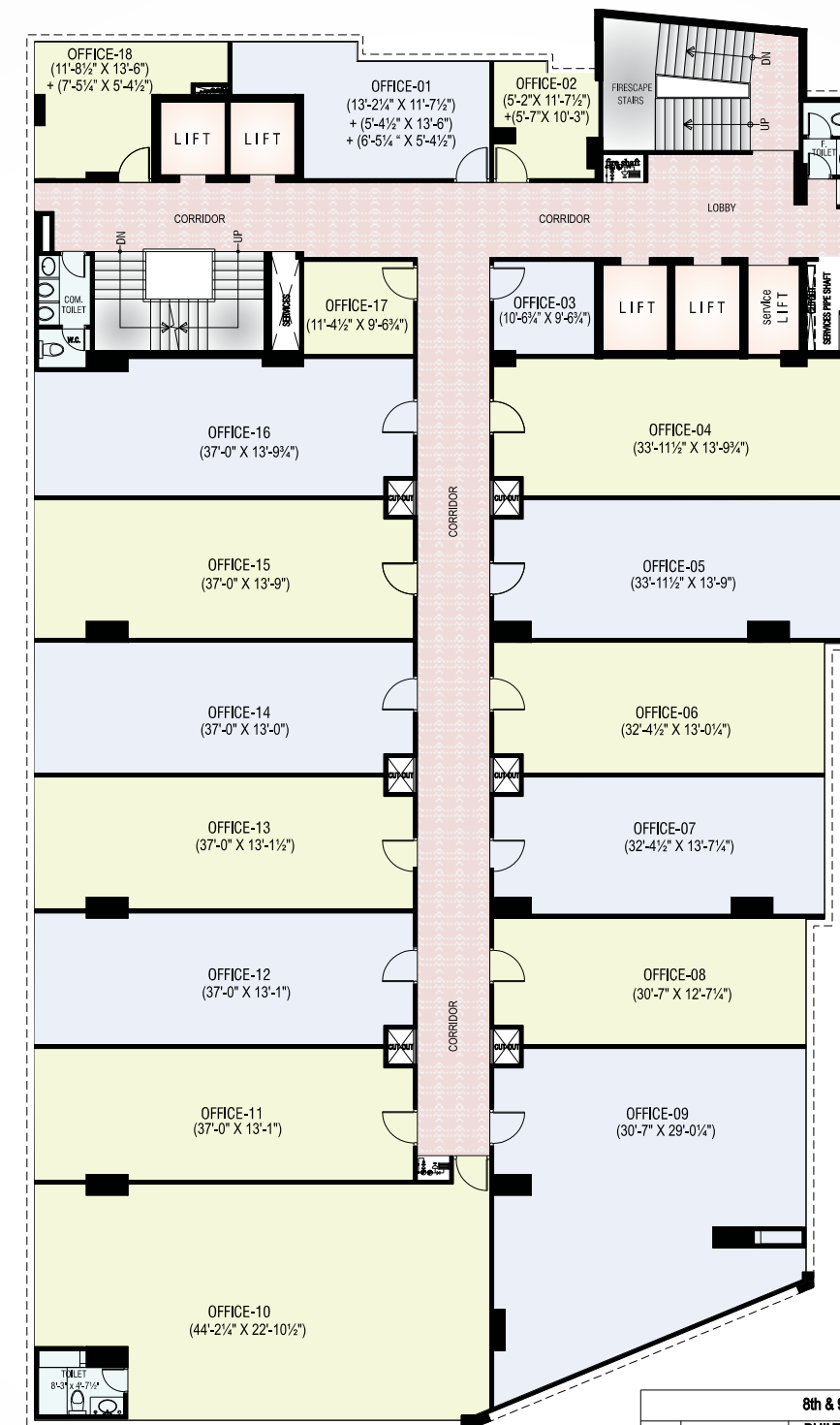
7th FLOOR
Block Layout



7TH FLOOR AREA SHEET				
S.NO.	OFFICE	BUILT UP AREA (S.FT.)	SALE AREA (S.FT.)	CARPET AREA (S.FT.)
1	701	268.45	278.00	246.21
2	702	117.19	178.00	101.62
3	703	100.96	146.00	88.79
4	704	480.95	688.00	437.95
5	705	482.20	670.00	432.81
6	706	418.31	604.00	400.19
7	707	438.08	632.00	407.30
8	708	380.83	552.00	365.53
9	709	874.06	1287.00	832.17
10	710	1016.72	1473.00	987.52
11	711	264.38	384.00	242.80
12	712	221.87	322.00	208.97
13	713	226.52	327.00	213.20
14	714	282.35	388.00	242.88
15	715	243.38	353.00	225.25
16	716	288.84	387.00	247.78
17	717	277.65	402.00	235.97
18	718	282.74	410.00	266.85
19	719	228.00	332.00	210.42
20	720	213.48	310.00	184.17
21	721	108.89	158.00	96.99
22	722	188.25	287.00	178.93
TOTAL		7917.87	10612.00	6884.76



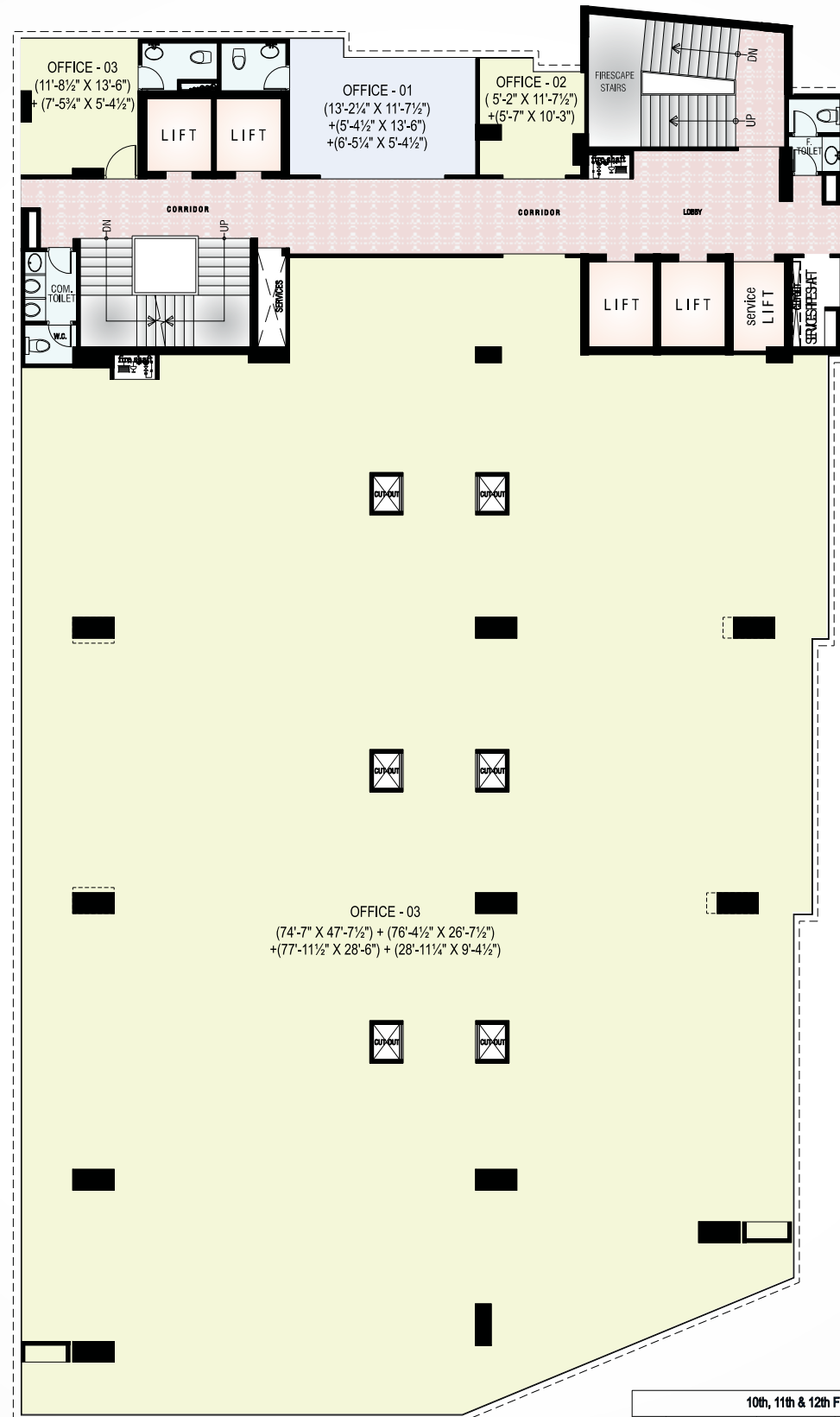
8th - 9th FLOOR
Block Layout



8th & 9th FLOOR PLAN				
S.NO.	OFFICE	BUILT UP AREA (S.FT.)	SALE AREA (S.FT.)	CARPET AREA (S.FT.)
1	801-801	280.45	378.00	246.28
2	802-802	117.19	170.00	101.82
3	803-803	100.96	146.00	88.77
4	804-804	480.65	668.00	437.55
5	805-805	482.20	670.00	432.81
6	806-806	416.31	604.00	400.19
7	807-807	438.08	632.00	407.30
8	808-808	380.83	552.00	365.53
9	809-809	874.06	1287.00	832.17
10	810-810	1016.72	1473.00	987.52
11	811-811	479.32	695.00	459.20
12	812-812	479.32	695.00	459.50
13	813-813	481.08	698.00	458.60
14	814-814	478.43	691.00	458.58
15	815-815	503.97	731.00	479.33
16	816-816	496.42	720.00	467.02
17	817-817	108.69	158.00	96.98
18	818-818	188.25	287.00	178.10
TOTAL		7747.72	11235.00	7357.85



10th - 12th FLOOR
Block Layout



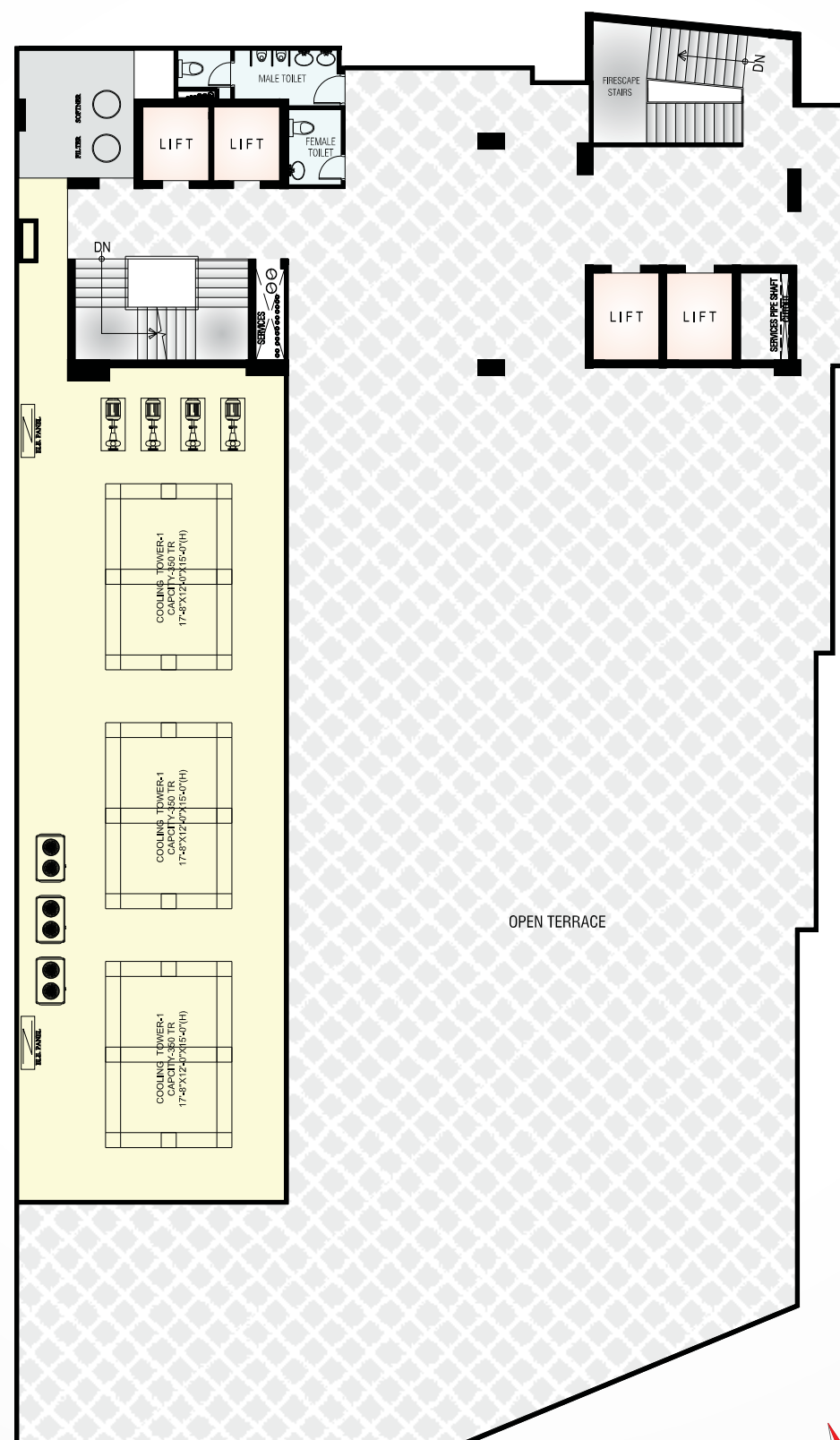
10th, 11th & 12th FLOOR PLAN				
S.NO.	OFFICE	BUILT UP AREA (S.FT.)	SALE AREA (S.FT.)	CARPET AREA (S.FT.)
1	OFFICE-01	7795.02	11303.00	7705.00
2	OFFICE-02	260.45	378.00	247.00
3	OFFICE-03	117.19	170.00	102.69
4	OFFICE-03	198.26	287.00	176.21
TOTAL		8370.92	12138.00	8230.90

13th FLOOR
Block Layout



13TH FLOOR PLAN				
S.NO.	TYPE	BUILT UP AREA (S.FT.)	SALE AREA (S.FT.)	CARPET AREA (S.FT.)
1	KITCHEN AREA	575.27	834.00	533.45
2	OFFICE	108.69	158.00	96.98
3	OFFICE	100.96	146.00	88.77
4	RESTAURANT	1002.66	1454.00	961.28
5	BUSINESS CENTER	2777.42	4027.00	2705.53
6	GYM, SPA & SALOON	3023.83	4385.00	2921.95
TOTAL		7588.83	11004.00	7307.96

TERRACE PLAN
Block Layout



Chordia's is a Jaipur based renowned family owned real estate company. Two decades since its inception, it has created many remarkable landmarks across the city. The group owes this success to its competitive price, excellent service and strong ethics.


Our group founder chairman Mr. Vinay chordia started his journey as Professional Jeweller. After getting successfully established in jewellery business, he embarked his journey in the world of Real Estate in 1990, Being pioneer in the world of real estate Chordia Group was the first to introduce the concept of Jda approved integrated township and built chordia city. Group focus has been on the development of benchmark Commercial Spaces, Farm Houses, Townships and Residential with world-class quality, exclusive utilization of space and innovative architecture. His passion towards innovation, his expertise and visionary values helped us to provide advanced architecture and engineering to the society and as a result Chordia group earned new heights year on year.

Combining path breaking innovation with outstanding design and superior execution it has improved quality of life with a high degree of customer satisfaction in Jaipur. The Group has been persistently working towards scaling new heights when it comes to development with innovation. Most of our projects ecologically balanced by the way of resources and unique perspective techniques we use. With total development of more than 1 million sq. ft., we are home to more than several families constructed across Jaipur.

With an experience from these many years and the highly committed workforce with a flavour of international quality standards our group is continuously working towards building architectural masterpieces which will benefit our society and economy.

We are a Group that is committed in efficiency and meticulous in approach.

COMPLETED PROJECTS



Chordia Enclave-1st, Jaipur




Chordia Enclave-2nd, Jaipur



Raman Marg, Tilak Nagar, Jaipur



Chordia Enclave-3rd, Jaipur



Chordia Enclave-3rd, Jaipur



Park Retreat
Near Kamla Nehru Nagar, Jaipur

ONGOING PROJECTS



CHORDIA CITY
Near Kamla Nehru Nagar,
Jaipur